



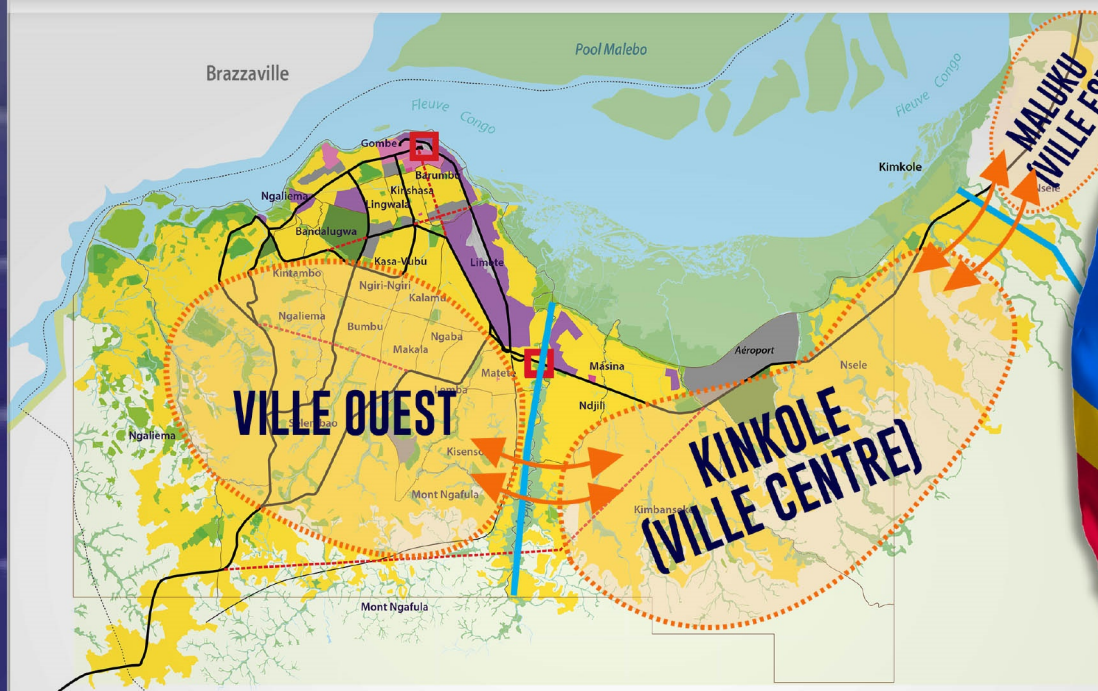
EXPOBETON 5th EDITION CITIES DEVELOPMENT FAIR

KINSHASA HORIZON 2050

AS SEEN BY THE **S O S A K**

3 POLES, 4 CITIES FOR THE CITY-PROVINCE OF KINSHASA: AN ANSWER FOR ITS MANAGEMENT

FREE ACCESS



Strategic Orientation Scheme of the Kinshasa Agglomeration

24th to 26th of November 2021

PULLMAN HOTELS - KINSHASA

+243 83 04 41 051

info@expobetonrdc.com

www.expobetonrdc.com

SCAN ME NOW



SPONSORS



@expobetonrdc

@expobetonrdc

@expobetonrdc

UNDER THE HIGH PATRONAGE
OF
H.E. THE PRESIDENT OF THE DEMOCRATIC REPUBLIC OF CONGO



*Felix Antoine
Tshisekedi Tshilombo*



Vision of the President of the Republic

Founding a modern State, overcoming poverty, decreeing a great national cause to build a strong Congo turned towards its development in peace and security, a Congo reconciled with itself.

Pillar 1.

Pacify the country

Pillar 2.

Promote national reconciliation

Pillar 3.

Consolidate democracy

Pillar 4.

Restore the rule of law and its authority

Pillar 5.

Rehabilitate and restore the image of
diplomacy

Pillar 6.

Fight corruption and crime
economic

Pillar 7.

Consolidate macroeconomic stability,
consolidate public finances and reform the
financial system

Pillar 8.

Make education the key to change and
main social elevator

Pillar 9.

Establish universal health coverage

Pillar 10.

Promote employment and training
continuous professional

Pillar 11.

Empower women and promote youth

Pillar 12.

Improve the business climate and promote
entrepreneurship

Pillar 13.

Fight against climate change

Pillar 14.

Meeting the challenge of access to electricity and
water

Pillar 15.

Planning the territory, developing and modernizing
infrastructure

Pillar 16.

Develop agriculture and agro-industry

Pillar 17.

Diversify the economy and develop trade,
industry as well as SMEs / SMIs

Pillar 18.

Make the mining and hydrocarbons sector
attractive and efficient

Pillar 19.

Develop tourism, culture and the arts

Pillar 20.

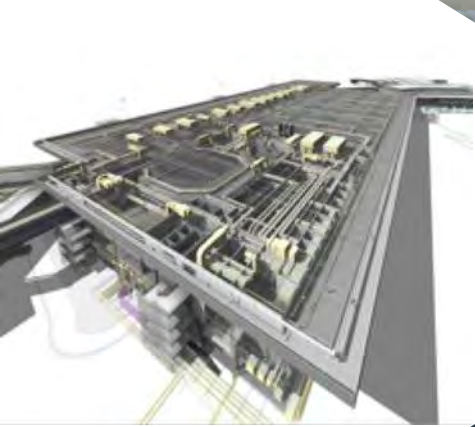
Combat poverty, exclusion and vulnerability



❖ SUMMARY :

- ✓ CONTEXT
- ✓ OBJECTIVES
- ✓ EXPECTED OUTCOME
- ✓ METHODOLOGY
- ✓ NEEDS





MAIN THEME:

3 POLES, 4 CITIES FOR THE CITY-PROVINCE OF KINSHASA: AN ANSWER FOR ITS MANAGEMENT



Africa, the least urbanized continent but with the fastest demographic growth in the world with a population that is expected to double over the next 20 years due to the rural exodus and urban sprawl that characterize most of African cities created around urban areas.

More and more, we can see that several cities in Africa are urbanizing, and Kinshasa is undoubtedly, the largest emerging megalopolis.

With its 9,965 km² and a population of approximately 14.9 million inhabitants, the Kinshasa City-Province still has large unbuilt areas. It is located 284 meters above the sea level and is bordered by the Congo River which is the most important watercourse in the country and among the longest in the world.

In the current city of Kinshasa, several rivers, tributaries of the river, leave from the south and throw towards the North making Pool-Malebo the only marshy vegetation in the Region whose remainder consists mainly of vegetation on sandy soil.

History informs that for several years; the geographical area of Kinshasa (Kin-Malebo) has always been a crossroads of commerce and exchanges between peoples coming from upstream countries and those coming from the depths of Central Africa.

Renamed Kinshasa since June 30, 1960, the former metropolis Léopoldville knows a population growth and an extension, from East to West, uncommon in the sub-Saharan part of the continent.

To date, it has a population density of around 950 inhabitants per sq.km, most of which come from neighboring provinces but also from central, northern, and eastern provinces, even distant cities.

Its strong concentration and historical role have earned it several twinning agreements with Brazzaville, Brussels, Tehran, Dakar, Lomé etc.

The aim of these agreements was trade and cultural exchanges, but also political and scientific experiments.

The Constitution adopted in 2006 consecrates Decentralization and the 25 provinces + the City-Province of Kinshasa, headquarter of the National Institutions and divided into 4 districts; TSHANGU, LUKUNGA, Mont AMBA and FUNA (this subdivision no longer has legal value because "the district" no longer exists in the nomenclature of the administrative (territorial) subdivision, composed of 24 communes.



This structuring is unique to the City-Province of Kinshasa. TSHANGU counts the rural communal area of MALUKU which represents 79% of the total area of the city.

Although the Decentralization Law devotes important prerogatives to municipalities, it was retained through the SOSAK which is a provincial Edict adopted in 2014, the need to group the municipalities into 3 autonomous cities, taking hydrography into account.

However, thanks to the twinning with some cities that already operate with this form of territorial governance or who share the same ambitions as those of the City-Province of Kinshasa, an adaptation of the policies experienced by others can promote good functioning of an administrative system adapted to its size and its population: One (1) Governor and three (3) mayors. The province and its 3 or 4 cities, which would correspond to the transformation of districts into cities.

It goes without saying that the many challenges facing the city-province today, in knowledge: infrastructure, mobility, environment, fiscal resources, health, education, commerce, services, agribusiness etc., can be reorganized in such a way as to create a balance between the 3 or 4 cities by removing existing infrastructural inequalities.

The existence of the Strategic Orientation Scheme for the Kinshasa Agglomeration, the acronym SOSAK, which is an enriching tool for the future of this megalopolis, should serve as a landmark in the reorganization of the Master Plan for the Kinshasa agglomeration and its surroundings.

Thus, wishing to anticipate in this logic, the organizing committee of the ExpoBeton DRC Conference would like, for this edition, to involve the various actors of everyday life in this reflection which should lead to an outline of guidelines to be submitted to institutions for the implementation of the various recommendations that will emerge from it.



Organizing Committee
ExpoBetonDRC



DEMOGRAPHY

Communes	Population projetée	Densité de population (hab./km ² commune)	Densité de population (hab./km ² bâti)
Ngiri-Ngiri	145 801	49 424	50 979
Kalamu	284 716	47 771	50 481
Bumbu	201 896	43 986	48 301
Ngaba	131 884	45 166	47 441
Matete	185 836	38 959	47 166
Makala	192 987	37 546	44 570
Kinshasa	132 346	40 974	43 250
Ndjili	278 146	29 716	40 194
Kasa-Vubu	132 665	33 249	36 954
Lingwala	87 111	31 111	35 848
Bandalungwa	172 216	24 637	34 102
Barumbu	122 495	28 554	30 624
Kintambo	87 330	22 053	25 387
Lemba	283 044	20 131	23 706
Kisensu	208 638	12 975	22 952
Masina	280 041	5 909	22 898
Selembao	224 254	11 488	14 468
Kimbanseke	625 715	3 444	13 615
Limete	227 103	8 014	12 404
Ngaliéma	446 689	7 131	10 787
Gombe	30 754	2 502	3 261
Mont Ngafula	93 571	220	1 900
Maluku (*)	93 316	/	/
Nsele (*)	51 308	/	/



OBJECTIVES

The most specific objective is to promote close management between governing authorities and the population:

- Address the imbalance in the development of public facilities
- Identify solutions adapted to each city and solve them
- Promote the twinning of each city with other cities.

EXPECTED OUTCOME

- Anticipate the emergence of the Province of Kinshasa by 2050
- Create trade centers and nearby socio-community facilities
- Reduce the flow of traffic movements from East to West
- Create jobs close to employees
- Reduce the movements of citizens toward the two western and eastern towns by bringing the Urban authorities closer to their town halls
- Public investments for VRD and other equipment as well as the promotion of PPP
- Private investments
- Job creation for millions of people.

METHODOLOGY

- Panel discussions
- Presentations
- Networking

NEEDS

To organize this conference, ExpoBeton DRC needs:

- Contacts
- Conference area, Exhibitions, accommodation, and catering at the Pullman Hotel
- National and international communication and advertising.
- Support for the student competition.



PARTICIPANTS

- Political decision-makers, members of the National and Provincial Government (Kinshasa), national and provincial MoP's;
- The private sector, investment, trade and services, industry, partners in development, diplomatic representations
- Customary authorities
- International financial institutions
- Construction professionals
- The corps of military geniuses
- Faculty of Higher Institutes and Universities
- Independent researchers
- Students
- Real estate developers
- Hardware stores.

PREPARATORY DOCUMENTS

- The Constitution of the Democratic Republic of Congo
- The Decree of the 20th of June 1957, on Town Planning
- Law 08/12 on fundamental principles relating to the free administration of the provinces
- SOSAK, Strategic Orientation Scheme of the Kinshasa Agglomeration (2014)
- PDTK Kinshasa Transport Master Plan
- Habitat III
- Kinshasa my city, my capital, Book by Mr. Bienvenu BOLA (preface LS Moulin)
- AMCHUD V
- The National Action Plan for Housing
- The New United Nations Program for Cities.

DATE & VENUE

- From the 24th to 26th of November 2021 at the Pullman Hotel in Kinshasa Gombe

Contact

WWW.EXPOBETONRDC.COM

E-mail : info@expobetonrdc.com

Mobile : +243830441051



Featured Speakers



H.E. SAMA LUKONDE
Prime Minister



H.E. Alexis GISARO
Minister of State in charge
of Infrastructures.



H.E. PIUS MWABILU
Minister of State in charge of
Town Planning & Housing



Hon. GODE MPOYI
President of the Provincial
Assembly of Kinshasa



Hon. NGOBILA MBAKA
Governor of the City-
Province of Kinshasa



H.E. GUY LOANDO
Minister of State in charge of
Regional Planning.



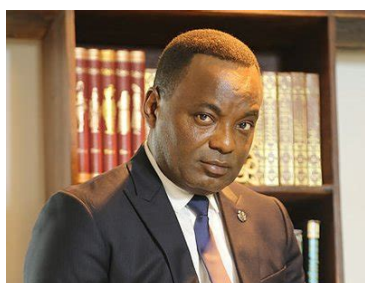
H.E. CHRISTIAN MWANDO
Minister of State in charge of
Planning



H.E. JULIEN PALUKU
Ministre of Industry



H.E. THIERRY TSHITENGA
Provincial Minister -
Infrastructure and public works



Hon. DIDIER MUMENGI
Sénator



Mr. Jean-Christophe CARRET
Country Director World Bank



Mr. ROBERT LUZOLANU
Coord. Kinshasa Urban
Dvlpmt Unit



Hon. Jean BAMANISA SAIDI

**President of the Organizing
Committee / EXPOBETON DRC.**

➤ **Businessman and politician**

After 4 successful editions, ExpobetonRDC invites you for the 5th edition, to participate in what Kinshasa will become here by 2050.

Through your suggestions, your interventions, presentations of your products and services, all together and hand in the hand, will create a new destiny for our spaces and for the generation to come.

Institutional decision-makers will rely on the contributions of each citizen who participates in the life of each sector of activity of the Kinshasa megalopolis.

Faced with the desire of HE the President of the Republic Félix Tshisekedi Tshilombo to respond to the needs of the population, the long-awaited reforms at the level of National and Provincial Institutions must be undertaken.

The private business sector must seize this opportunity to launch PPP projects and provide a framework for business flourishing in central Africa.



Jean Bamanisa Saidi



5th ExpoBeton Forum

Pullman Grand Hotel from November 24 to 26, 2021

Main theme: 3 Poles - 4 Cities for the Province of Kinshasa, a response to its management.

DAY 1

24th NOVEMBER 2021

SESSION 1: Inventory: Origin-Site-Population, Mobility and VRD, Housing, Employment, Education, Health, Economy, Infrastructures & Equipment, Energy, Agriculture, Tourism, Environment,				
WED. 24	ACTIVITY	STAKEHOLDER	ORGANIZATION	Focal point
8H00_9H00	OPENING			
	Guests Registration			OC
	Arrival of officials		State Protocol Division	OC State Protocol
9H00 - 10H00	OPENING CEREMONY			
	Nationa Anthem			
	Welcome Remarks		MC	MC
	OC Speech		JBS	
	Welcome Speech		ProGouvKin	
	Opening Speech		Prime Minister	
10H00- 11H00	Ribbon cutting		VIP	
	Stands visit		Delegations	
11H00-1H30	Cocktail	Sponsor Space	Visit and tasting in our sponsorship area.	Cocktail Sponsor

SESSION 2:

12H-12H20	Inventory: Mobility & VRD of the Kinshasa Municipalities		Min Prov Kin ITPR	
12H20-12H40	Kinshasa Natural Sites and the distribution of its equipment			
12H40-13H	The City of Kinshasa and its components: Health and Education			
13H-13H40	DEBATES			
13H40-14H	Coffee break			
14H-14H20	Urban and rural housing planning and policy in Kinshasa			
14H20-14H40	Inventory of access to water and electricity			
14H40-15H	Agri-food production in urban and rural areas			
15H00-15H20	Kinshasa's health and environment policy			
15H20-15H40	Kinshasa and its tourist, cultural and leisure destinations			
15H40-16H30	DEBATES			
16H30-18H	Stands visit	B2B	Company visits	



DAY 2

25th NOVEMBER 2021

THU. 25	SESSION 1: DIAGNOSIS of the Institutional Framework: Land and Housing, Planning, Decentralization and the particularity of Kinshasa Province City and Headquarters of National Institutions, ETD management tools		
9H-9H20	Practical questions of land legislation in urban and semi-urban areas of the City Province		
9H20-9H40	Planning and Housing Policy in Kinshasa		
9H40-10H	Architectural evolution, its landmarks or innovations		
10H-10H40	DEBATES		
10H40-11H	Access to real estate financing in the DRC		
11H-11H20	The complementarity and functioning of Decentralized and Decentralized Administrations		
11H20-11H40	Equipment management by the Central Power and the Province		
11H40-12H	Modernization of administrative and fiscal management by the National and provincial authorities		
12H-12H40	DEBATES		
12H40-13H	Coffee break	Visit and tasting in our sponsorship area.	Cocktail Sponsor

SESSION 2:

Strategic Orientations: Networking and Extension of the City Province, Politico-Administrative Organization, Strengthening of the Metropolis and Development Poles and their Specificities, Multimodal Transport, Connectivity and Planning of other Provinces and their Cities,

14H-14H20	Presentation of SOSAK: Development process and regulatory framework		
14H20-14H40	SOSAK: The strengths of the 3 Development Poles of Kinshasa Province		
14H40-15H	Development of neighboring provinces & their impacts in the sub-region	Ministre of State in charge of Regional Planning	
15H-15H40	DEBATES		
15H40-16H	Legislation & Procedure for the transformation of the 4 Districts of Kinshasa into 4 Cities		
16H-16H20	Mechanism and implementation of the Urban Plan in the DRC		
16H20-16H40	The political and administrative organizations of the City Province of Kinshasa and the other Provinces		
16H40-17H	DEBATES		
17H-18H	Stands visit B2B Company visits		



DAY 3

26th NOVEMBER 2021

FRI. 26	SESSION 1: KINSHASA HORIZON 2050: Demography and Populations, Education - Teaching - Health, Future developments and their dedicated spaces to be protected,		
9H-9H20	Strategy of future developments and their dedicated spaces & to protect		
9H20-9H40	Kinshasa Connectivity Projects in the West Corridor of Central Africa		
9H40-10H	Equipment needs for the modernization of the 4 new towns		
10H-10H40	DEBATES		
10H40-11H	Coffee break	Visit and tasting in our sponsorship area.	Cocktail Sponsor
11H-11H20	New town KIN KITOKO, Implementation Strategy		
11H20-11H40	Modernization of Kinshasa North: Presentation of the SOSAK PPA		
11H40-12H	Establishment of industrial zones: the MALUKU SEZ		
12H-12H20	Reference Urban Plan of Goma and Bukavu, experience and lessons for urban centers	Prof Kanene; Prof Mpuru	
12H20-13H	DEBATES		

SESSION 2:

Investments and Opportunities: Housing, Employment-Industry- Services- Agro-industry, Environmental Management, Tourism

14H-14H30	Presentation & Opportunities of Housing Projects	Entreprises	
14H30-15H	Presentation & Opportunities Agro-industrial Projects		
15H-15H30	Presentation & Opportunities Projects Education, Health, Environment		
15H30-16H	Presentation & Opportunities of Infrastructure & Mobility Projects		
16H-16H20	Competition for the creation of Cities by Universities		
Clotting			



SPONSORING FORM



From the **24th to 26th November 2021**
IT'S THE 5th EDITION OF THE
CITIES DEVELOPMENT FAIR

ExpoBeton DRC offers you even more business opportunities through this **5th edition**.
Theme: **3 Poles - 4 Cities for the Province of Kinshasa, a response to its management.**

We invite you to be the official sponsor and partner of actions for 3 days of remarkable activities and events from November 24 to 26, 2021 at the Pullman hotel in Kinshasa.

GOLD / 15.000\$



Be unique and great to communicate to a special range of clients...

MORE INFO IN TABLE

SILVER / 12.000\$



Keep up with the Congolese market and meet the experts and multinationals at the service of the Congolese national economy ..

MORE INFO IN TABLE

BRONZE / 8.000\$



Find your advantages in the Congolese market near experts and multinationals serving the Congolese national economy ...

MORE INFO IN TABLE

EXHIBITORS



Enjoy multiple opportunities to make good business and make your brand shine ...

MORE INFO IN TABLE

COMPANY INFORMATION

Name:.....

Surname:.....

Responsability

Signature

Notification:

Book your accommodation at **Pullman Kinshasa** now and take advantage of the preferential rates that are specific to ExpoBeton RDC.

H9635-re@accor.com

+243 815 553 002

Ref: ExpoBeton



PAYMENT METHOD

CASH (AMOUNT):.....

TRANSFERT (AMOUNT):.....

ACCOUNT NUMBER: 05100-35101-01034361401-81 USD

ACCOUNT NAME : NCP&DC-EXPO-BÉTON

BANK: RAWBANK RDC SA

SWIFT: RAWBCDKI

www.expobetonrdc.com

info@expobetonrdc.com

Mobile. +243 830 441 051



N.C.P. & D.C.
CONTACT: (+243) 907000211



RUBIS Design
CONTACT: (+243) 815002500



ANAPI
CONTACT: (+243) 999925026



GOUVERNEMENT DE LA RDC

SPONSORING TABLE

Choose one of the offers from this table and ensure visibility throughout our communication stages and event days.

Sponsor GOLD : 15.000 \$	
Presence in the field: Expo Space, Conference Room, 28m2 Lounge (4x7m)	
50% of communication spaces throughout the event complex	
POSM and SERVICE SHOP implementation in our spaces:	Parking, stand space show, etc...
Presence of promoters and activators in our spaces:	Promos boys & girls, supervisors, activators, etc ...



Prime place in all our media: for 6 months of communication from August 2021 to January 2022.	
Animated logo + TV and radio signature for all EXPOBETON broadcasts: TV spot, Jingle, Radio, Web, TV intervention, etc ...	
Main sponsor logo placed next to the EXPOBETON logo (prominent place): In all our publications and posters.	

Main Leader of the event	
Presence of choice in all EXPOBETON invitations and event participations: trade fair, press conference, etc ...	
Other proposals to discuss	

Sponsor SILVER : 12.000 \$	
Presence in the field: Expo Space, Conference Room, 18m2 stand	
30% of communication spaces in the event complex	
POSM and SERVICE / show space implementation:	Entrance Parking, show service area (entertainment).
Presence of promoters and activators / show space:	Promos boys & girls, supervisors, activators, etc ...



Prime place in some of our media: 3 months of communication from September to November 2021.	
Animated logo + TV and radio signature for all EXPOBETON broadcasts: TV spot, Jingle, Radio, Web, TV intervention, etc ...	
Sponsor logo placed at the bottom of the page: In all our publications and posters.	

Event leader	
Presence of choice in all EXPOBETON invitations and event participations: trade fair, press conference, etc ...	

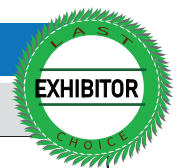
Sponsor Bronze : 8.000 \$	
Presence in the field: Expo & Stand area of 18m²	
20% of communication spaces in the event complex	
POSM and SERVICE / show space implementation:	show service area (entertainment).show (animation).
Presence of promoters and activators / show space:	Promos boys & girls, supervisors, activators, etc ...



Prime place in some of our media: No signage on the public highway.	
Logo presence for EXPOBETON broadcasts: TV spot.	
Sponsor logo placed at the bottom of the page: In all our administrative letters.	

OTHER POSSIBILITIES:

Exhibitor: See stand price on the registration form	
Field presence by project and availability	
Free choice of space allocated according to the price and size of the chosen	
Stand Expo Beton provides the exhibitor with: 2 chairs, 1 table, 1 extension, 3 sockets and 1 fan:	available in each stand.
Presence of exhibiting agents and exhibition products	



Media communication space	
Individual communication at the exhibitor's expense for promotion and stand visit: TV spot, posters, flyers, panels, etc ...	

REGISTRATION FORM 2021

SPACE RENTAL



www.expobetonrdc.com
 info@expobetonrdc.com
 Mobile. +243 830 441 051

Any company wishing to have a stand must subscribe to the listing criteria below or visit our website www.expobetonrdc.com for booking.



COMPANY NAME:

Category (Sector).....

Address:

.....Postal code:.....Town:.....

Tel:.....Office number:.....

Email:.....

INTEREST:

We subscribe for a stand of:

Company Manager



6/3m

Price: 3000\$



4/3m

Price: 2500\$



3/2m

Price: 1250\$

Name:.....

Surname:.....

Position:.....

Signature

PAYMENT METHOD

CASH (AMOUNT):.....

TRANSFERT (AMOUNT):.....

ACCOUNT NUMBER: 05100-35101-01034361401-81 USD

ACCOUNT NAME : NCP&DC-EXPO-BÉTON

BANK: RAWBANK RDC SA

SWIFT: RAWBCDKI

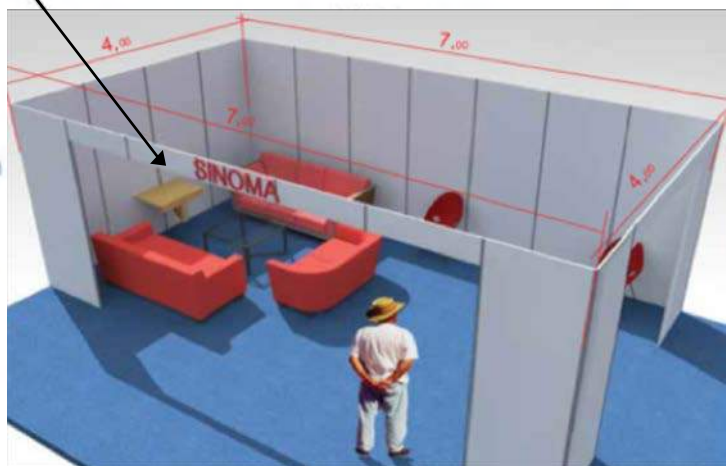
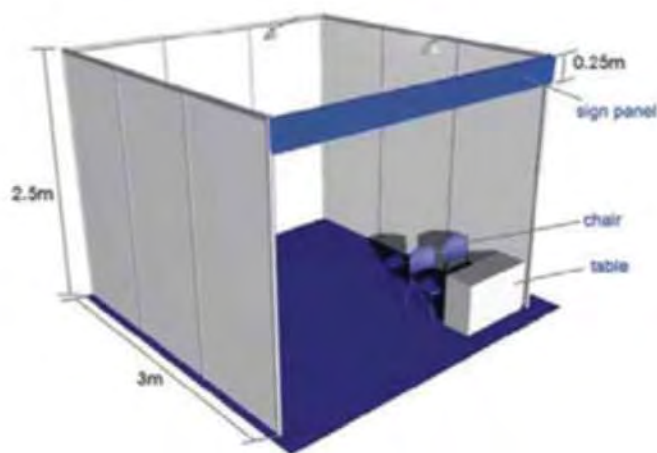
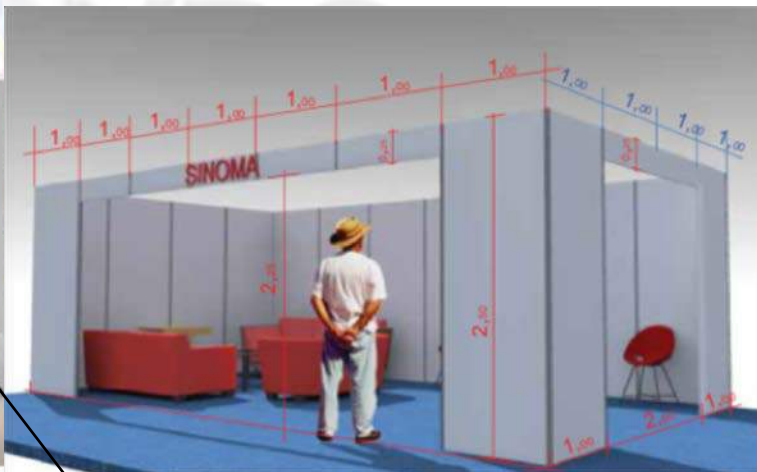


N.C.P. & D.C.
 CONTACT: (+243) 907000211

RUBIS Design
 CONTACT: (+243) 815002500

ANAPI
 CONTACT: (+243) 999925026

STAND PANEL BRANDING DIMENSIONS



Bache(Vinyl) Print

Bon pour un Branding stand - complet 360° et facile a executé



E-mail : info@expobetonrdc.com

Tél : +243830441051

www.expobetonrdc.com

Souvenirs

2018





LE CORRIDOR OUEST DE LA RDC PROJETS A DEVELOPPER
& OPPORTUNITES



EXPO
BETON
RDC 2018

3ème édition

SAL... CONSTRUCTION, DES INF... CTURES, DE... GIE,
... TERIEUR ET DE T...

FIND ALL OUR EXPOBETON PHOTOGRAPHS ON OUR WEBSITE

E-mail : info@expobetonrdc.com

Mobile : +243830441051

www.expobetonrdc.com

Thank's...

Merci...

Aksanti...

Matondo.

